



Valve Monitoring Box

VM-Series



3D Visual Indicator



Temperature Ranges

Company Profile

- Global Distribution Market
- Main Valve Accessories
- Thoughtful Service System
- Carefully Designed



PNEUMASTER has a global distribution market of valves accessories of controlling process valves. We focus on technology and supply reliable products manufactured to global customers.

With our manufacturing valve monitoring box, we keep developing our products and enhancing our products process, maintenance and aim at top-level quality.

Pneumaster's valve monitoring box are used in all industry area, including explosion-proof and water-proof application, as well as corrosion resistant environment. We provide the protection and automation to meet all kinds of applications.





Product Range

- ① Valve Accessories
- ② Insulation System and Service

Valve Monitoring Box

Product Range.

- Serie VM1 box ABS or aluminum body, non-explosion proof
- Serie VM2 box aluminum body, explosion proof
- Serie VM2 box stainless steel material, explosion proof



Feature.

- For high pressure use,corrosion and chemical resistance.
- Good performance in chemical working environments and outdoor facility.
- Suitable for food,medical,chemical,off-shore and mining industry.



Special Applications.

- 1.PST - Partial Stroke Testing: detection function for valves which have been in a fixed static position for a long time.
- 2.PTR - Position Transmitter Range: 4-20mA signal output.

Technical Data.

Body Material	Copper Free Aluminum or Nylon+Glass Fibre or AISI 316SS
Aluminum Coating	PTFE/Epoxy Resin
Material of Shaft	Hardened AISI316 Stainless Steel
O-ring Sealing	Low Temperature NBR or FVMQ
Temperature Range	-40°C to 80°C for Standard Range; -56°C to 80°C Available on Request
Switch/Sensor	Mechanical/Magnetic/Inductive
Cable Entries	No.2 Standard (3 or 4 as option)

Serie VM1.

VM1 monitoring box series heavy duty enclosures available in nylon and glass fibre be used in the most extreme weather conditions.



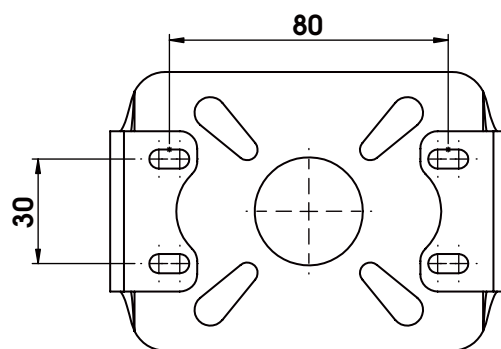
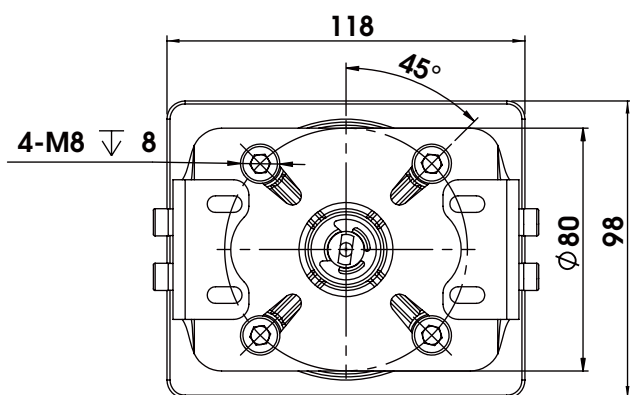
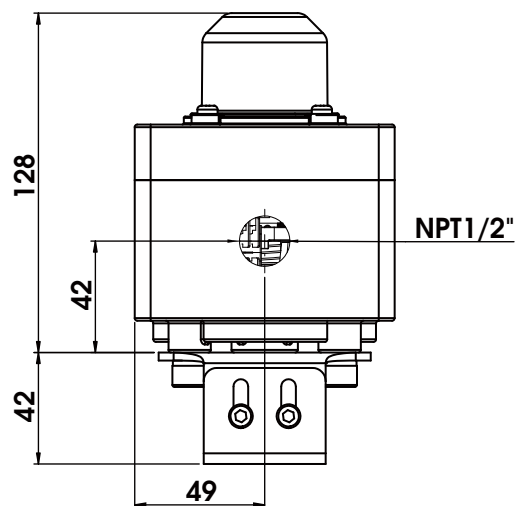
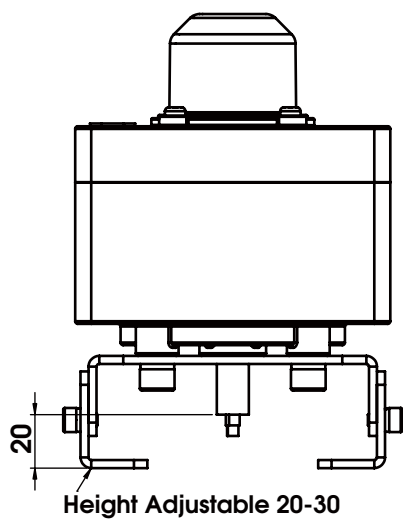
Scope of Application.

Temperature Range:

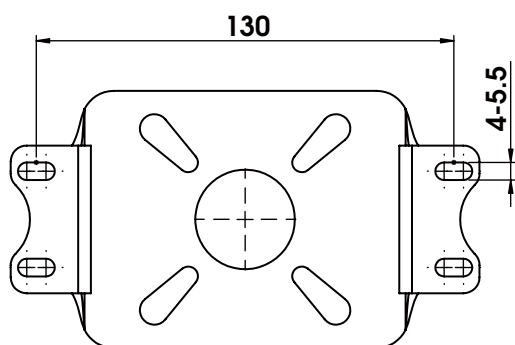
-40°C to 80°C with Normal Temperature.



Dimension Drawing (mm).



Installation Method 1



Installation Method 2

Series VM2G & VM2A.



Scope of Application.

Temperature Range:

- 40°C to 80°C with Normal Temperature.
- 56°C to 80°C with Low Temperature.

Approvals:

ATEX IECEx CCC

SIL3 Certificate

Protection Rating:

IP66-68

Explosion Proof Level:

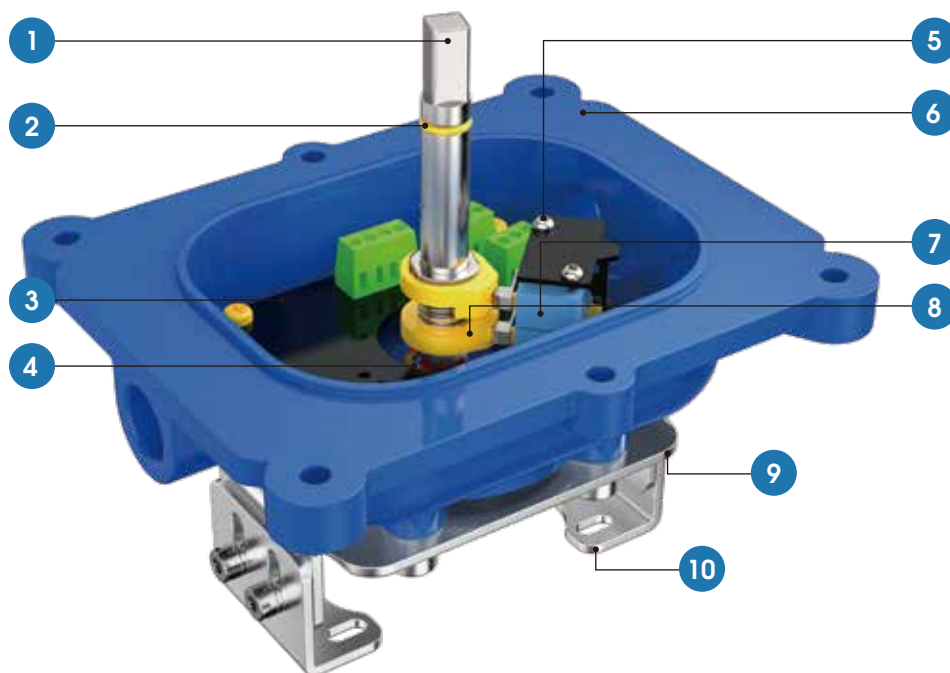
VM2G Ex db IIC T6 Gb

VM2A Ex ia IIC T6 Ga & Ex tb IIIC T80°C Db

(Be used in a dust zone 20,21&22 and gas zone 0,1&2 explosive area, certification will cover both enclosures and contact/sensor inside.)

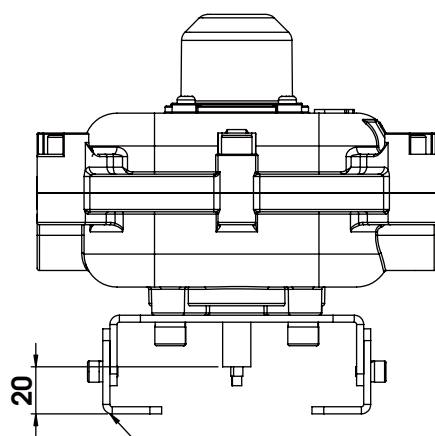


Parts of Product.

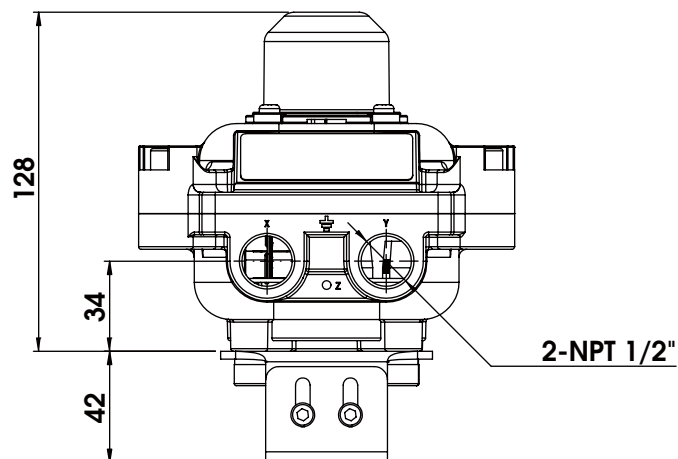


- | | | | | | |
|---------------|-----------|-----------------|--------------|---------------------------|---------------|
| 1 Shaft | 2 O-rings | 3 Circuit board | 4 Jump ring | 5 Phillips pan head screw | 6 Lower cover |
| 7 Microswitch | 8 Cam | 9 Bracket-1 | 10 Bracket-2 | | |

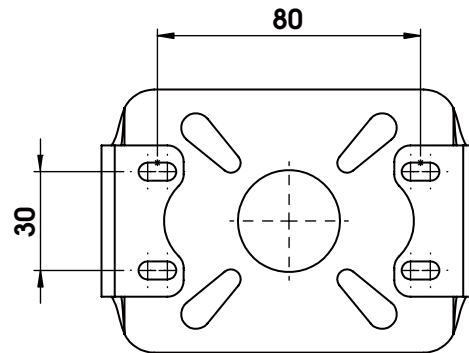
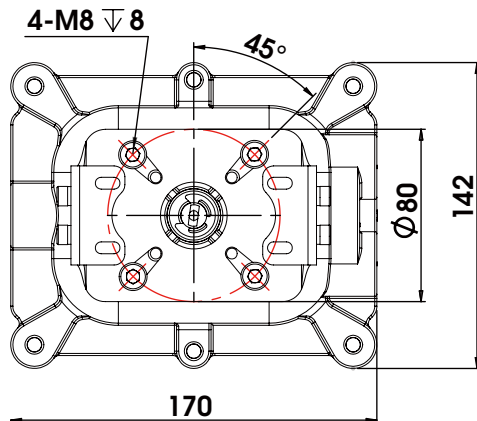
Dimension Drawing (mm).



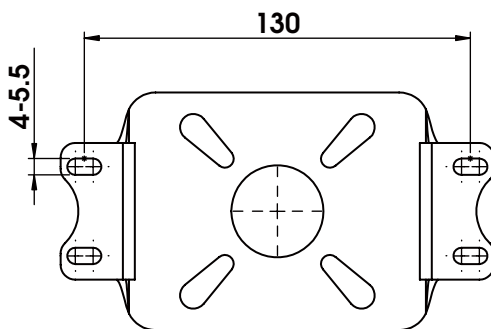
Height Adjustable 20-30



Dimension Drawing (mm).



Installation Method 1



Installation Method 2

Mounting Kits.



(1) Rotary Mounting kit of MK1 for Namur pattern actuator

It can be adjusted the height from 20mm to 30mm, and the width is 80mm and 130mm be coexisted.

(2) Linear Mounting kit of MK2 for Linear diaphragm and piston actuators

The extended lever system, combined with the remote pin connection, provides wide range of fitting flexibility, and precise adjustment.

Service System.

We are focus on technology and supply reliable products manufactured to global customers.

Provide the protection and automation to meet all kinds of applications.

PNEUMASTER engineers are happy to help you with your automation requirements.

Customizes.

After-sales.

C0572-6222566
ontact.

Esales@pneumastercontrol.com.cn
mail.

Type Selection Table.

VM 2 G L1 21 MS2 PST NT 000

Code key								
Series	Anti-explosion	Explosion-proof Type	Material (Body)	Electrical Interface	Switch Type	Optional	Temperature	Special Remark
VM	1 =Non-explosion Proof	W =No	L1 =Aluminum+Epoxy Coating	20 =M20* 1.5	ES2 =Dry Contact Mech SPDT x2	PST =Part Stroke Test	NT =-40°C to 80°C	000
	2 =Explosion Proof	A =ExIICT6	L2 =Aluminum+PTFE Coating	21 =1/2"NPT (Explosion proof type standard electrical interface)	ES4 =Dry Contact Mech SPDT x4	PTR =Position Transmitter	LT =-56°C to 80°C (Not applicable to ABS housing)	
		G =ExdIICT6	NS =ABS (Applicable only to Non explosion-proof types)	43 =3/4"NPT	IP2 =Inductive Proximity x2	000 =No		
			SS1 =304SS	19 =Φ19 (ABS body standard electrical interface)	IP4 =Inductive Proximity x4			
			SS2 =316SS		MS2 =Magnetic Proximity SPDT x2			
					MS4 =Magnetic Proximity SPDT x4			



PNEUMASTER

Singapore Headquarters:

Pneumaster Controls Pte. Ltd.

Address: 110 TUAS SOUTH AVE 3

THE INDEX #01-31 SINGAPORE 637369

Tel: 0065 65610100

Fax: 0065 65651832

Email: info@pneumaster.sg

Website: www.pneumaster.sg

Huzhou Factory:

Address: 188 Xinqiao Road, Changxing Economic
Development Zone, Huzhou City, Zhejiang Province, China

Tel: 0572-6222566

Email: sales@pneumastercontrol.com.cn

Website: www.pneumastercontrol.com.cn