



Regulator Valve



AISI 316 / AISI 316L
Aluminum



Pneumatic Pressure



Temperature Ranges

Company Profile

- Global Distribution Market
- Main Valve Accessories
- Thoughtful Service System
- Carefully Designed



PNEUMASTER has a global distribution market of valves accessories of controlling process valves. We focus on technology and supply reliable products manufactured to global customers.

With our manufacturing valve accessories, we keep developing our products and enhancing our products process, maintenance and aim at top-level quality.

Pneumaster's valve accessories are used in all industry area, including explosion-proof and water-proof application, as well as corrosion resistant environment. We provide the protection and automation to meet all kinds of applications.





Product Range

- ① Valve Accessories
- ② Insulation System and Service

Regulator Valve

- Special design of Waterproof, level of protection is IP66.
- 100% routine test for Zero leakage.
- Range of Pressure Regulation: 0.05~1.2Mpa
- Filtration Accuracy: 5 μ m 20 μ m
- Maximum Pressure: 3Mpa



About Regulator Valve.

Series of modular units in stainless steel AISI 316/316L or aluminum suitable for industrial application like: food, medical, chemical, oil & gas and mining.

Standard Features.

Light weight and compact size for space saving, the air preparation units have the following standard features:

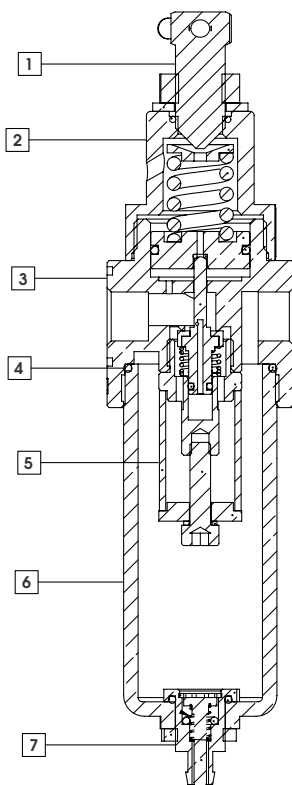
- For high pressure use, corrosion and chemical resistance.
- Good performance in chemical working environments and outdoor facility.
- Suitable for food, medical, chemical, off-shore and mining industry.
- Metallic parts meet NACE MR-01-75.
- The product effectively removes water and particle.
- Accurate and sensitive pressure setting.
- Lubricator oil can be replenished without stopping air supply.



* The modular units are supplied together with the bracket nuts and gauge always in stainless steel material.

Technical Data.

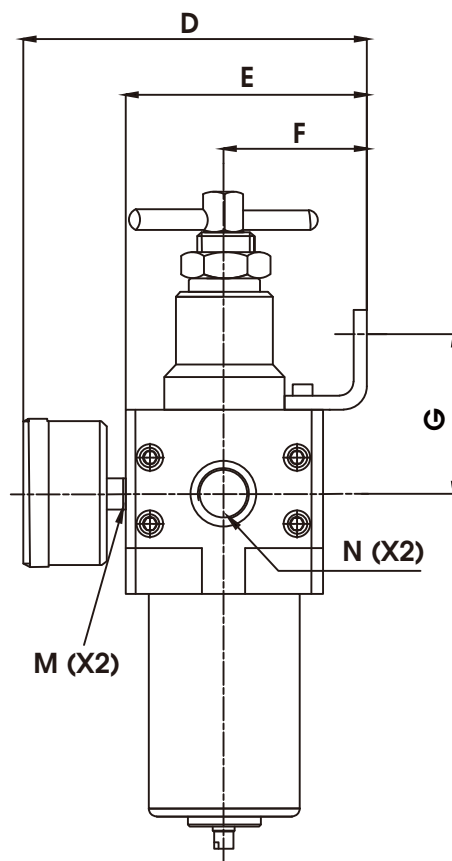
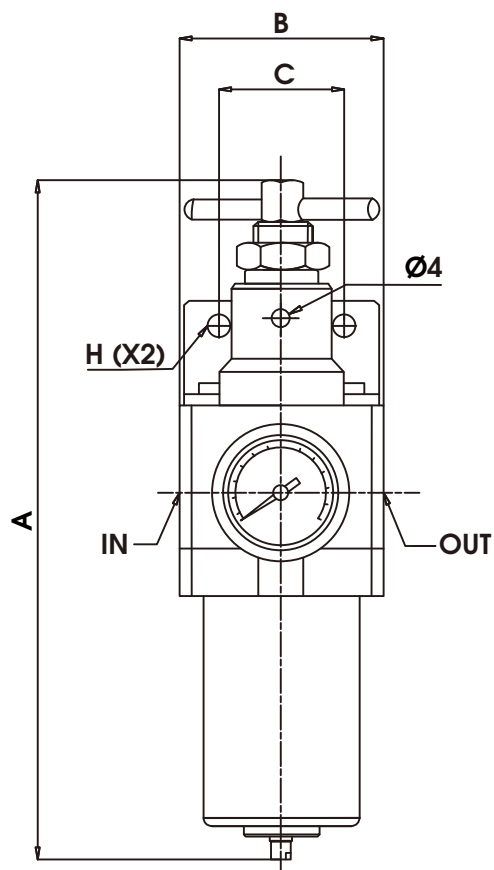
Item	PNEU14FR	PNEU38FR	PNEU12FR	PNEU34FR	PNEU10FR
Over Pressure Exhaust	Reliving Ø4	Reliving Ø4	Reliving Ø4	Reliving Ø4	Reliving Ø4
Pressure Regulator	Piston	Piston	Piston	Piston	Piston
Max. Flow Rate (l/min)	1850 l/min	3800 l/min	3800 l/min	8900 l/min	8900 l/min
Temperature Range	-30°C to 100°C (NT)	-40°C to 80°C (LT)	30°C to 150°C (HT)	-56°C to 80°C (ST)	
Suggested Oil	With ISO VG 32 viscosity according to normative ISO 3448				
Condense Drain	Semi-automatic (standard) - On request manual/automatic				
Cup Capacity	105cm ³	110cm ³	110cm ³	200cm ³	200cm ³



Materials

Pressure Regulator Screw	Stainless Steel AISI 316/316L
Pressure Regulator Cup	Stainless Steel AISI 316/316L/Aluminum
Regulator Body	Stainless Steel AISI 316/316L/Aluminum
O-ring Seal	Silicon (standard) or FKM or FVMQ
Filtering Element	Stainless Steel AISI 316L
Filter Cup	Stainless Steel AISI 316/316L/Aluminum
Drain Unit	Stainless Steel AISI 316/316L

Product Size Drawing.



Size										
Model	A	B	C	D	E	F	G	H	M*	N*
PNEU14FR	192	45	25.50	91	61.5	39	33.5	6	NPT1/8"	NPT1/4"
PNEU38FR	243	58	36	99	70.5	41.5	44	9	NPT1/4"	NPT3/8"
PNEU12FR	243	58	36	99	70.5	41.5	44	9	NPT1/4"	NPT1/2"
PNEU34FR	275	75	50	125	83	45	67	9	NPT1/4"	NPT3/4"
PNEU10FR	275	75	50	125	83	45	67	9	NPT1/4"	NPT1"

*Optional: G thread and Rc thread

About Product Maintenance.



Dismantle:

The filter pressure reducing valve can not be disassembled during operation, if it needs to be disassembled, the intake air source needs to be closed to reduce the pressure of the inlet and outlet to normal pressure. Follow the steps to remove the parts, and in case of drain valve failure, remove and replace the drain valve.

Maintenance:

It is recommended to check and clean the filter element every six months (the working conditions and use environment will affect the condition of the filter element, and replace the dirty filter element in time). If the filter element is blocked by impurities, it will cause unstable signs of adjustment pressure fluctuations, and it is necessary to replace the filter element in time with a new one. During maintenance, pay attention to the moisture impurities in the filter bowl should not exceed the lower edge of the filter element, and it is necessary to drain water regularly.

Cleaning:

Wash all parts in hot, soapy or clean water. Rinse and dry the parts, use clean, dry air to blow out impurities inside the valve body, and purge the filter element to remove surface impurities.

Service System.

We are focus on technology and supply reliable products manufactured to global customers.

Provide the protection and automation to meet all kinds of applications.

PNEUMASTER engineers are happy to help you with your automation requirements.

Customizes.

After-sales.

C0572-6222566
ontact.

Esales@pneumastercontrol.com.cn
mail.

Type Selection Table.



PNEU 14 FR SS - 05 - NT - 000

Code key

Brand	Size	Series	Material	Filter Fineness	Temperature	Special Remark
PNEU	14 = 1/4"NPT Interface	FR	AL = Aluminum	20 = 20μm	NT = -30°C to 100°C	000
	38 = 3/8"NPT Interface		SS = 316SS	05 = 5μm	LT = -40°C to 80°C	
	12 = 1/2"NPT Interface		SL = 316L		HT = 30°C to 150°C	
	34 = 3/4"NPT Interface				ST = -56°C to 80°C	
	10 = 1"NPT Interface					



PNEUMASTER

Singapore Headquarters:

Pneumaster Controls Pte. Ltd.

Address: 110 TUAS SOUTH AVE 3

THE INDEX #01-31 SINGAPORE 637369

Tel: 0065 65610100

Fax: 0065 65651832

Email: info@pneumaster.sg

Website: www.pneumaster.sg

Huzhou Factory:

Address: 188 Xinqiao Road, Changxing Economic
Development Zone, Huzhou City, Zhejiang Province, China

Tel: 0572-6222566

Email: sales@pneumastercontrol.com.cn

Website: www.pneumastercontrol.com.cn