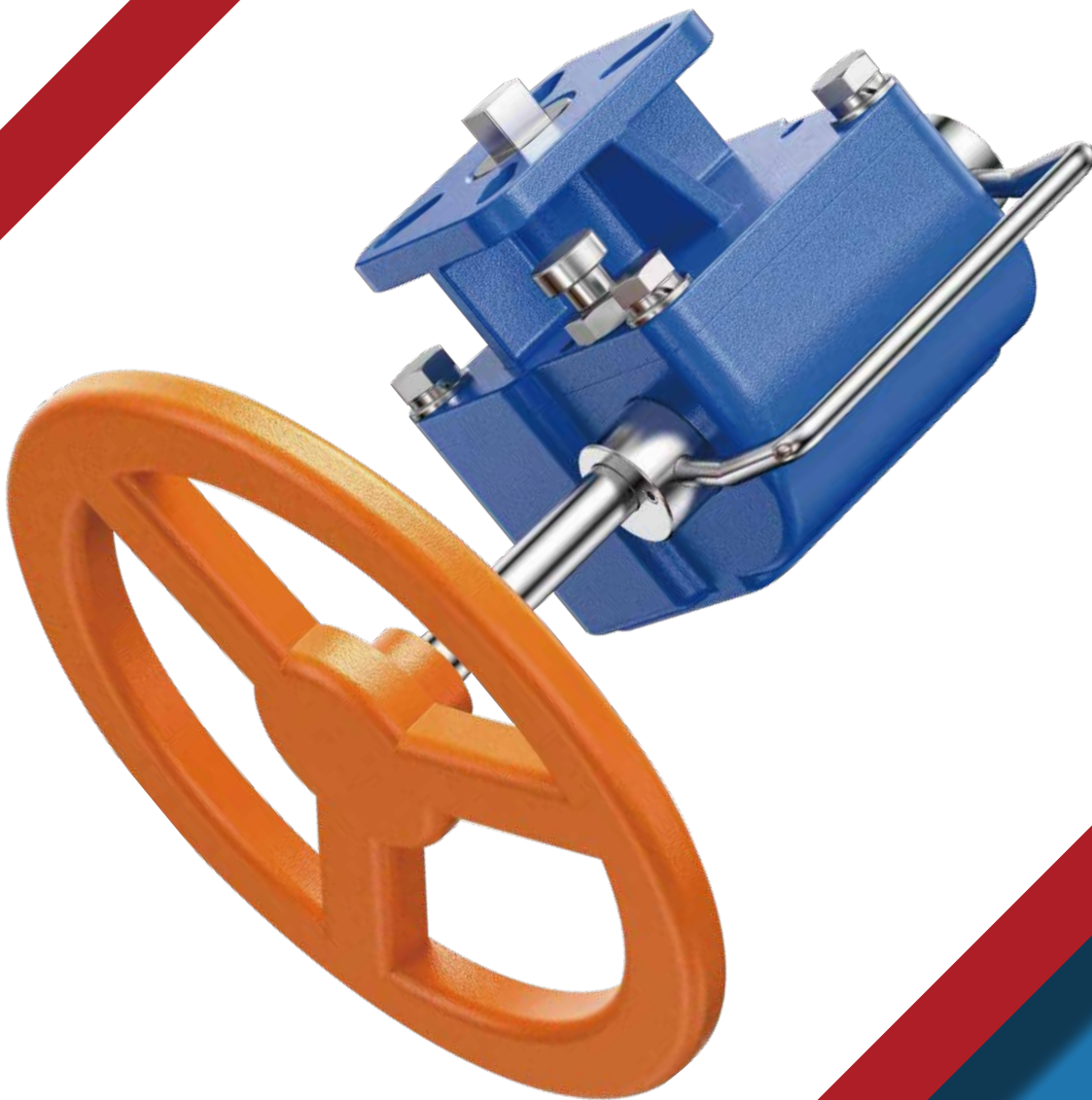




Emergency Handwheel EHW-Series



Company Profile

- Global Distribution Market
- Main Valve Accessories
- Thoughtful Service System
- Carefully Designed



PNEUMASTER has a global distribution market of valves accessories of controlling process valves. We focus on technology and supply reliable products manufactured to global customers.

With our manufacturing valve accessories, we keep developing our products and enhancing our products process, maintenance and aim at top-level quality.

Pneumaster's valve accessories are used in all industry area, including explosion-proof and water-proof application, as well as corrosion resistant environment. We provide the protection and automation to meet all kinds of applications.

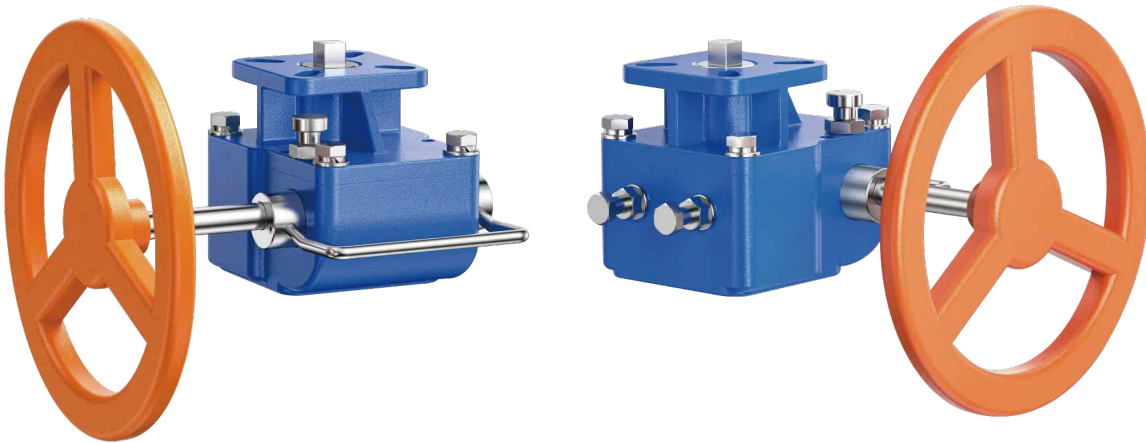




Product Range

- ① Valve Accessories
- ② Insulation System and Service

Emergency Handwheel



EHW Series.

EHW series handwheel are using new design of worm and gear box, which be used on angular travel's valves, for example, ball valve, butterfly valve, plug valve and so on. When there is no air or no electricity on site, we can use emergency handwheel to open or close the valves in emergency. It prevents any loss and accident to be happened.

Working Temperature.

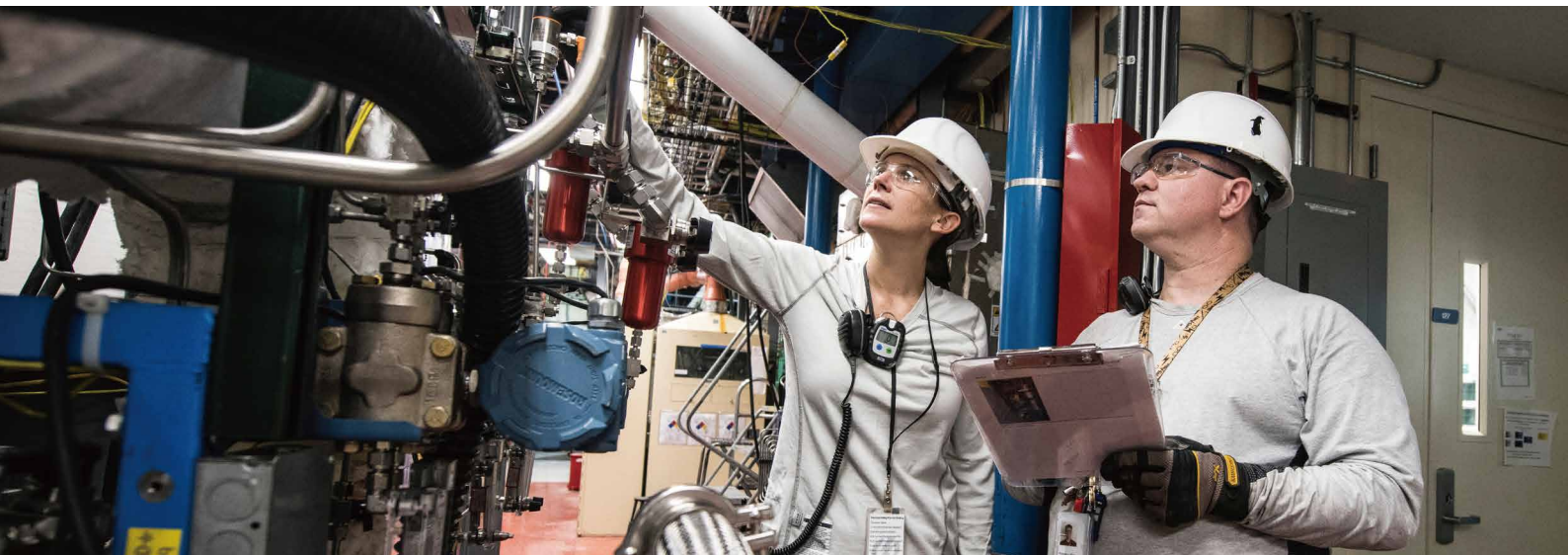
Temperature Ranges:

- 15°C to 80°C with Normal Temperature.
- 15°C to 150°C with High Temperature.
- 40°C to 80°C with Low Temperature.

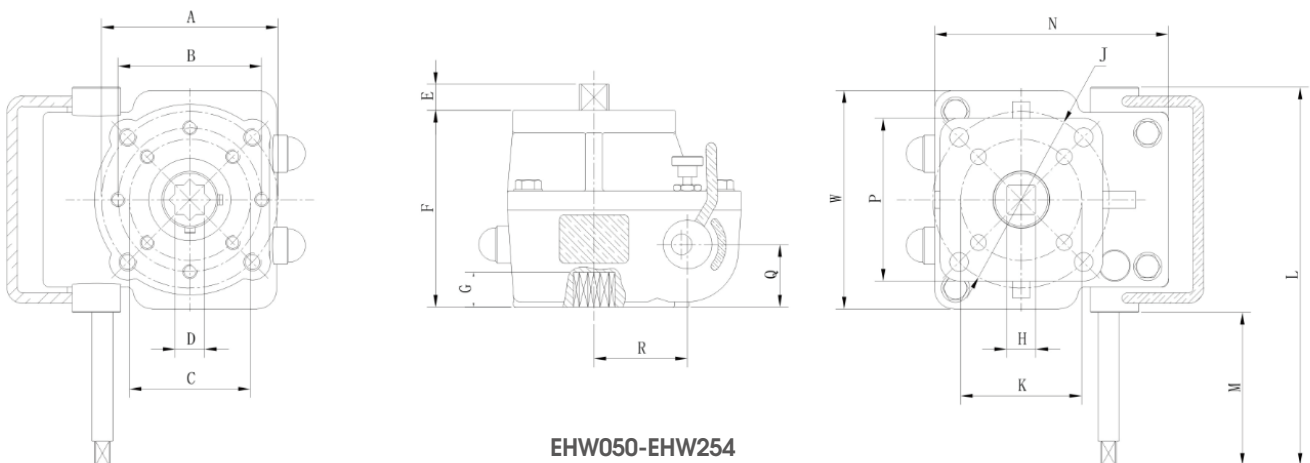


Feature.

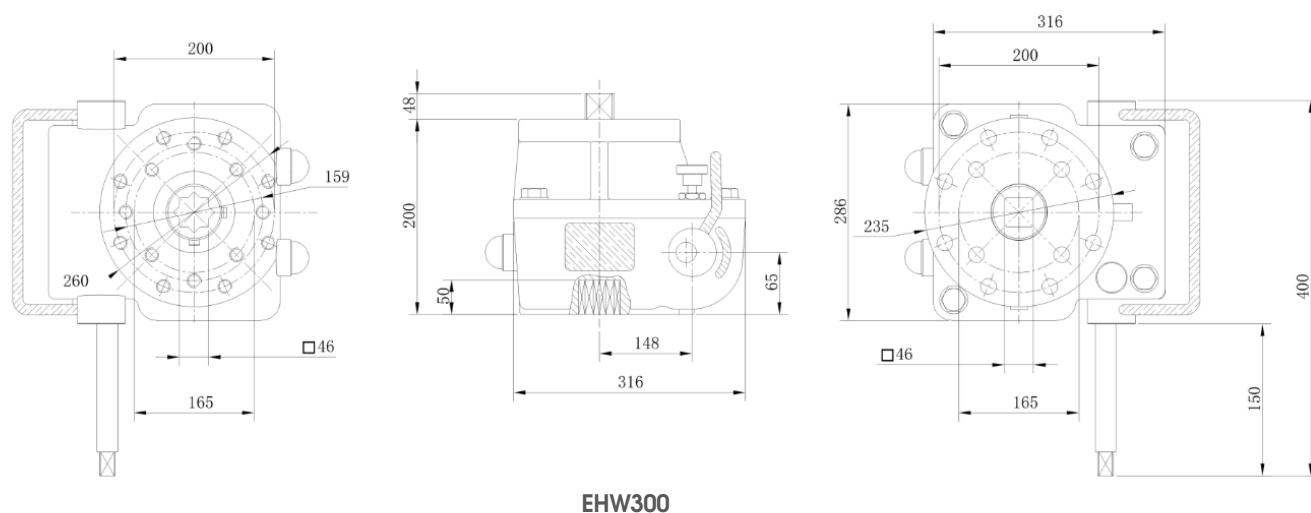
- One-piece design with compact; small size and low weight.
- The connection standard is ISO5211 which be convenient to be amounted with actuator and vavles.
- Have self-locked function design.
- Have two adjust screw which be adjusted within $\pm 10^\circ$.
- Using special grease on worm and gear for long life time.
- One-piece shaft with nickel plating for fracture-resistance function and long life time.
- O-ring between shaft and body be water-proof and dust prevention.
- Switch freely between manual and automation.



Product Size Drawing.



Product Size Drawing.



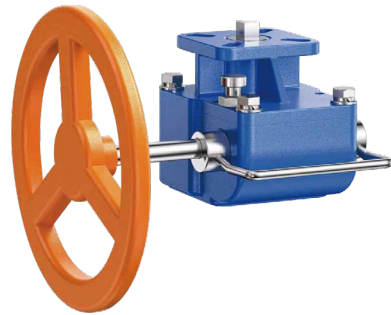
Technical Parameters.

Model	Connecting Dimensions of Valves		Connecting Dimensions of Actuate				
	Center Distance	Alxe Hole	Center Distance	Alxe Hole	Handwheel Diameter	Speed Ratio	N.m
EHW050	F05/F07	14 x 14	F05/F07	14 x 14	180	38:1	180
EHW070	F07/F10	17 x 17	F07/F10	17 x 17	200	37:1	320
EHW102	F07/F10/F12	22 x 22	F10/F12	22 x 22	280	35:1	680
EHW140	F10/F12 or F14	27 x 27	F10/F12 or F14	27 x 27	320	50:1	1200
EHW165	F14 or F16	36 x 36	F14 or F16	36 x 36	400	54:1	2100
EHW254	F16	46 x 46	F16	46 x 46	500	58:1	3000
EHW300	F16/φ200	46 x 46	F16/φ200	46 x 46	600	66:1	3800

Connection Size.

Model	A	B	C	D	E	F	G	H	N	W	J	K	L	M	P	Q	R	Handwheel Outer Diameter	KG
EHW050	F07	φ57	F05	14*14	17	105	20	14*14	115	90	F07	F05	180	71	70	33	44	φ180	3
EHW070	F10	φ70	F07	17*17	19	110	22	17*17	135	125	F10	F07	220	92	94	36	54	φ200	4.5
EHW102	F12	φ89	F07/F10	22*22	22	130	28	22*22	160	140	F12	F10	257	113	113	39	65	φ280	7
EHW140	F14	φ108	F10/F12	27*27	28	165	32	27*27	202	187	F14	F10/F12	330	148	129	56	82	φ320	13.7
EHW165	F16	φ108	F14	36*36	38	185	40	36*36	245	221	F16	F14	370	148	165	58.5	109	φ400	22
EHW254	F16	φ159	F14	46*46	48	200	50	46*46	288	252.5	F16	/	400	160	165	62	134	φ500	32.2
EHW300	F16	φ159	φ200	46*46	48	200	50	46*46	316	286.5	F16	φ200	421	170	φ235	65	148	φ600	38

EHW Series And Actuator Recommended Matching Table.

Model	PNEU Cylinder Model (Double Acting)	PNEU Cylinder Model (Single Acting)	Remarks
EHW050	BDA045-BDA104	BSR045-BSR090	<p>All in the recommended ratio of 5bar air source and 8 springs, customers can make their own ratio</p> 
EHW070	BDA125-BDA140	BSR104	
EHW102	BDA160-BDA180	BSR125-BSR140	
EHW140	BDA210	BSR160	
EHW165	BDA235	BSR180-BSR210	
EHW254	/	BSR235	

Service System.

We are focus on technology and supply reliable products manufactured to global customers.

Provide the protection and automation to meet all kinds of applications.

PNEUMASTER engineers are happy to help you with your automation requirements.

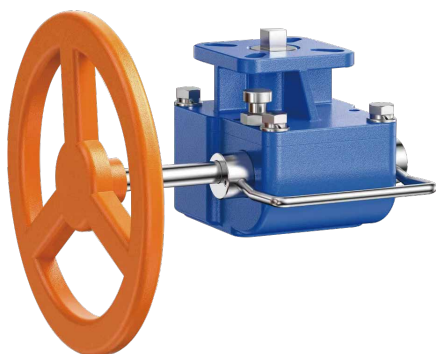
Customizes.

After-sales.

C⁰⁵⁷²⁻⁶²²²⁵⁶⁶ontact.

E^{sales@pneumastercontrol.com.cn}mail.

Type Selection Table.



EHW 050 NT 000

Code key			
Series	Size	Temperature	Special Remark
EHW	050	NT = -15°C to 80°C	000
		LT = -40°C to 80°C	
		HT = -15°C to 150°C	



PNEUMASTER

Singapore Headquarters:

Pneumaster Controls Pte. Ltd.

Address: 110 TUAS SOUTH AVE 3

THE INDEX #01-31 SINGAPORE 637369

Tel: 0065 65610100

Fax: 0065 65651832

Email: info@pneumaster.sg

Website: www.pneumaster.sg

Huzhou Factory:

Address: 188 Xinqiao Road, Changxing Economic
Development Zone, Huzhou City, Zhejiang Province, China

Tel: 0572-6222566

Email: sales@pneumastercontrol.com.cn

Website: www.pneumastercontrol.com.cn