



# ***Air Controller AC-Series***



Short Stroke



Temperature Ranges

# Company Profile

- Global Distribution Market
- Main Valve Accessories
- Thoughtful Service System
- Carefully Designed



PNEUMASTER has a global distribution market of valves accessories of controlling process valves. We are focus on technology and supply reliable products manufactured to global customers.

With our manufacturing valve accessories, we keep developing our products and enhancing our products process, maintenance and aim at top-level quality.

Pneumaster's valve accessories are used in all industry area, including explosion-proof and water-proof application, as well as corrosion resistant environment. We provide the protection and automation to meet all kinds of applications.





## **Product Range**

- ① Valve Accessory
- ② Insulation System and Service

# Air Controller



**Two Position Three-way Valve**

## Operational Benefits.

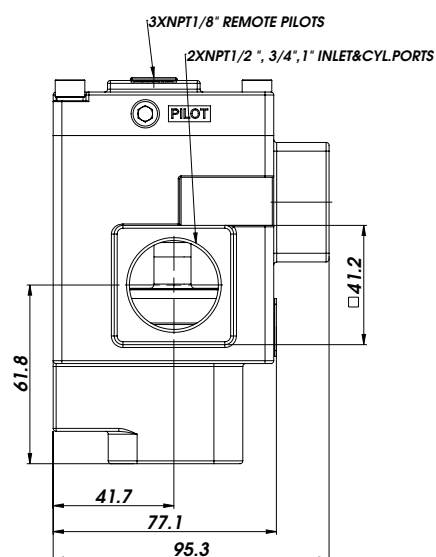
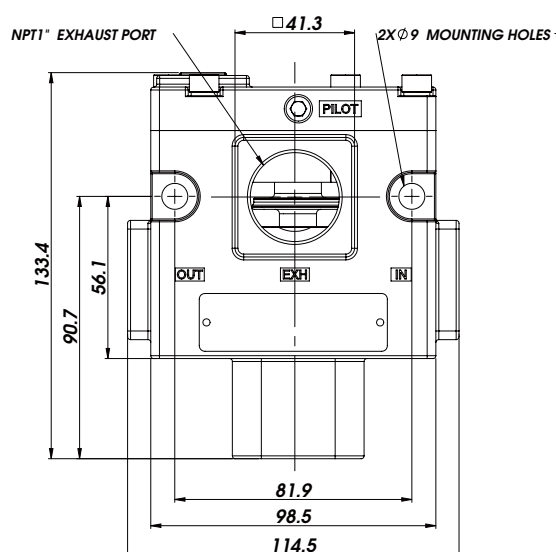
- 1) Short stroke with high flow.
- 2) Zero Leakage.
- 3) Intergrated spool with minimum friction,moving in a glass-like finished bore.
- 4) Powerful return because of the combination of mechanical and air springs.
- 5) The piston provides maximum transferring forces.
- 6) Balanced spool sustain the variations of pressure.

## Technical Data.

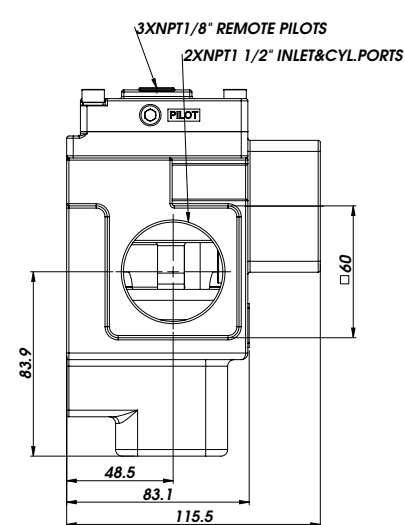
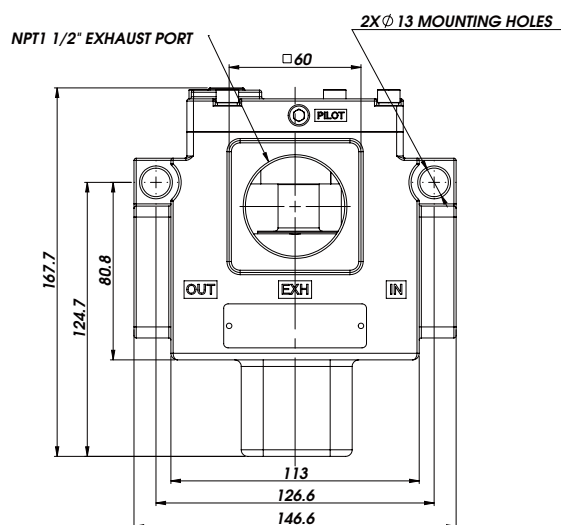
<b>Fluid:</b>	Compressed air,vacuum,inert gases
<b>Pressure Range:</b>	Vacuum to 150 PSI(10 bar)
<b>Air Signal Pressure:</b>	25 - 150 PSI ≥ main valve pressure(2 - 10 bar)
<b>Lubrication:</b>	Not required
<b>Filtration:</b>	40μ
<b>Temperature Range:</b>	NT:-40°C to 80°C;ST:-55°C to 80°C
<b>Flow(at 6 bar,△P=1bar)</b>	1/2":(11.0 C <sub>v</sub> ), 3/4":(15.3 C <sub>v</sub> ),1":(17.4 C <sub>v</sub> )

## Dimensions.

Function	Port Size	Flow(Max)	Individual Mounting
3/2 NC	1/2" - 3/4" - 1"	17.4 C <sub>v</sub>	Inline



Function	Port Size	Flow(Max)	Individual Mounting
3/2 NC	1" - 1 1/4" - 1 1/2"	33.5 C <sub>v</sub>	Inline



# Air Controller



**Two Position Four-way Valve**

## Operational Benefits.

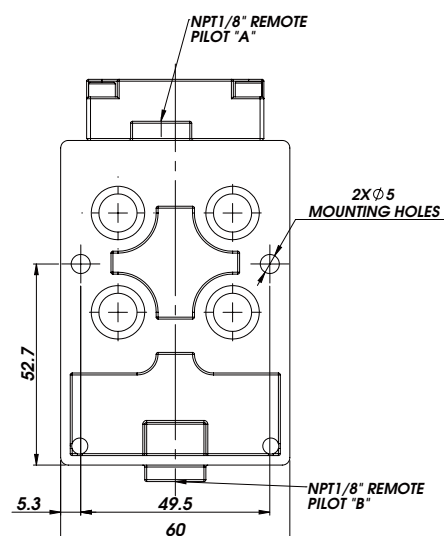
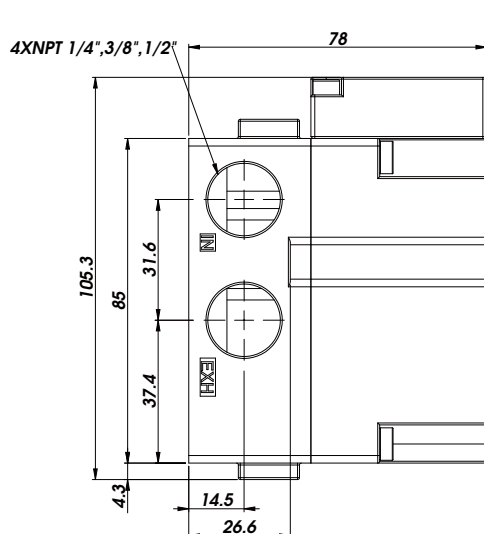
- 1) Short stroke with high flow.
- 2) Zero Leakage.
- 3) Intergrated spool with minimum friction,moving in a glass-like finished bore.
- 4) Powerful return because of the combination of mechanical and air springs.
- 5) The piston provides maximum transferring forces.
- 6) Balanced spool sustain the variations of pressure.

## Technical Data.

<b>Fluid:</b>	Compressed air,vacuum,inert gases
<b>Pressure Range:</b>	Vacuum to 150 PSI(10 bar)
<b>Air Signal Pressure:</b>	Single operator and 3 positions:25 to 150 PSI ≥ main valve pressure;Double operator:10 to 150 PSI
<b>Lubrication:</b>	Not required,if used select a medium aniline point lubricant(between 180°F to 210°F)
<b>Filtration:</b>	40μ
<b>Temperature Range:</b>	NT:-40°C to 80°C;ST:-55°C to 80°C
<b>Flow(at 6 bar,ΔP=1bar)</b>	3/8":(2.6 C <sub>v</sub> ), 1/2":(3.0 C <sub>v</sub> ), 3/4":(11.5 C <sub>v</sub> ), 1":(13.4 C <sub>v</sub> ), 1 1/4":(15.4 C <sub>v</sub> ), 1 1/2":(15.9 C <sub>v</sub> )

## Dimensions.

Function	Port Size	Flow(Max)	Individual Mounting
4/2 NC	3/8" - 1/2"	3.0 C <sub>v</sub>	Sub-base



## Type Selection Table.



**AC 23 12 AL NT 000**

Code key					
Series	Type	Size	Material	Temperature	Special Remark
AC	23 = Two Position Three-way Valve	12 = 1/2"NPT	AL = Aluminum Alloy Material	NT = -40°C to 80°C	000
	24 = Two Position Four-way Valve	38 = 3/8"NPT		ST = -55°C to 80°C	
		34 = 3/4"NPT			
		10 = 1"NPT			



**PNEUMASTER**

**Singapore Headquarters:**

Pneumaster Controls Pte. Ltd.

Address: 110 TUAS SOUTH AVE 3

THE INDEX #01-31 SINGAPORE 637369

Tel: 0065 65610100

Fax: 0065 65651832

Email: [info@pneumaster.sg](mailto:info@pneumaster.sg)

Website: [www.pneumaster.sg](http://www.pneumaster.sg)

**Huzhou Factory:**

Address: 188 Xinqiao Road, Changxing Economic  
Development Zone, Huzhou City, Zhejiang Province, China

Tel: 0572-6222566

Email: [sales@pneumastercontrol.com.cn](mailto:sales@pneumastercontrol.com.cn)

Website: [www.pneumastercontrol.com.cn](http://www.pneumastercontrol.com.cn)